

## ASSEMBLAGE 'S GIS

Laetitia MALTESE, Eliane LE DREZEN, Catherine SATRA, Gilles LERICOLAIS,

IFREMER – Centre de Brest BP 70 – F-29280 Plouzané cedex – France  
 email: [Laetitia.Maltese@ifremer.fr](mailto:Laetitia.Maltese@ifremer.fr)

IFREMER as co-ordinator has integrated in its own GIS project a database dedicated to the ASSEMBLAGE (Figures 3.2.2, 3.2.3), built up also in collaboration with Partner 5 this database uses the ESRI ARCVIEW GIS software too and the common platform integrating metadata information, including existing geological, geophysical and geographical data of IFREMER former projects in the Black Sea region as well as data from the literature. Later, these data will be correlated with thematic maps derived from seismic profiles of the ASSEMBLAGE project and with partner GIS database. To facilitate data exchange, all of the Black Sea seismic data related to ASSEMBLAGE objectives have been converted into the standard SEG Y format..

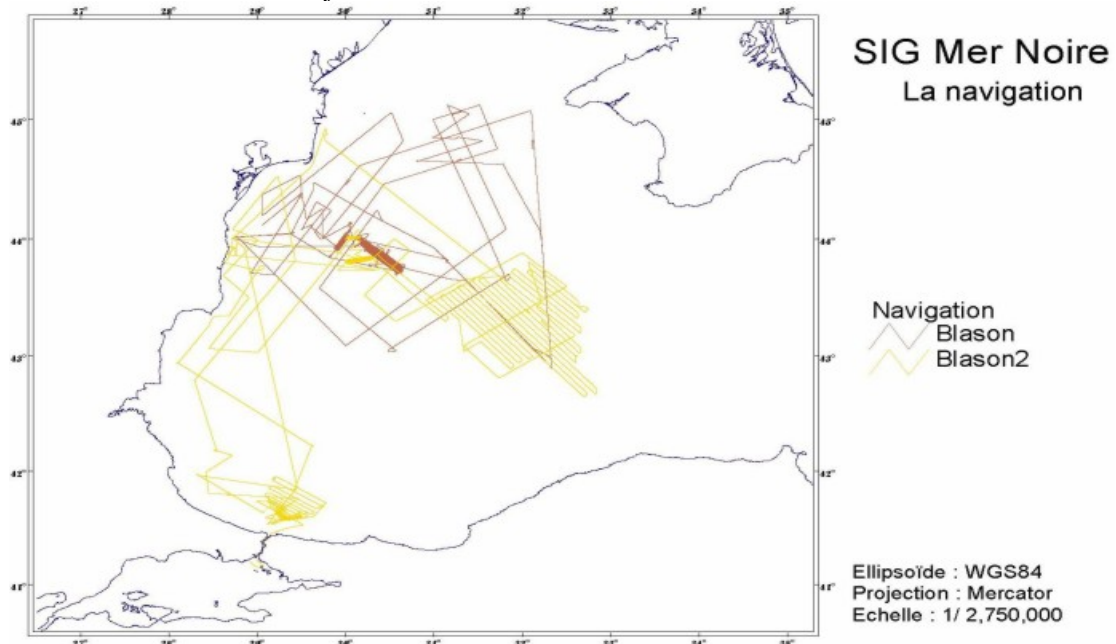


Figure 3.2.2: Partner 1 ArcView GIS location chart of the campaigns used for ASSEMBLAGE

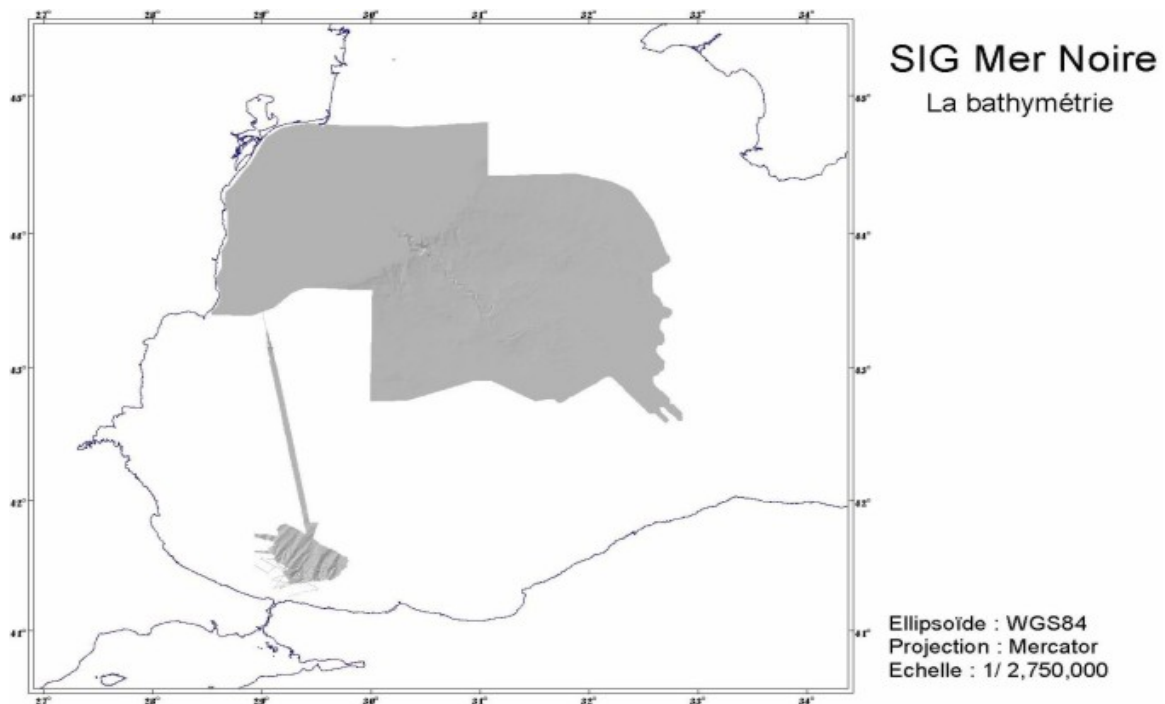


Figure 3.2.3: Partner 1 ArcView GIS location chart of the Bathymetry (grey scale) used for ASSEMBLAGE

