



Ifremer

**Département Etude des Ecosystèmes Profonds
Laboratoire Environnement Profond
Ifremer BP 70 – F-29280 PLOUZANE**

M-C. FABRI, DEEP/LEP,
mcfabri@ifremer.fr

Documentation
D 07- 018

Base de données Biocean

**Searching Biocean data
through OBIS**

**Census of Marine Life web
portal**

TABLE DES MATIERES

1. LOG IN	3
2. SELECT BIOCEAN DATA EXCLUSIVELY	4
3. MAKE A SELECTION THROUGH OBIS.....	5
4. SHOW OFF THE DATA	6
5. GET THE DATA	7
6. WORKING WITH THE DATA IN EXCEL.....	8
7. SELECT THE DATA YOU WISH TO WORK WITH IN EXCEL	8

Searching Biocean data through OBIS

1. Log in

Log in at the following address: <http://www.iobis.org>

The screenshot shows the OBIS website interface. At the top, the browser title is "Mozilla Firefox : Ifremer" and the address bar shows "http://www.iobis.org/". The page header includes the OBIS logo and navigation links: "Using OBIS | About the Data | About OBIS | News". Below the header, a yellow banner states "13.4 million records of 82000 species from 222 databases".

The main content area is divided into two search sections:

- SEARCH BY NAME:** A search box contains the text "Great white shark" or "Carcharodon" or "Carcharodon carcharias". Below the search box, a red circle highlights the link "Advanced Search including date, depth, dataset Browse by taxonomic groups".
- SEARCH BY GEOGRAPHY:** A world map is displayed with a "5° search area" dropdown menu and a "Search >>" button. The map shows continents and oceans labeled: Asia, Europe, Africa, North America, South America, Indian Ocean, Pacific Ocean, and Atlantic Ocean. A scale bar indicates 5000 miles and 5000 kilometers.

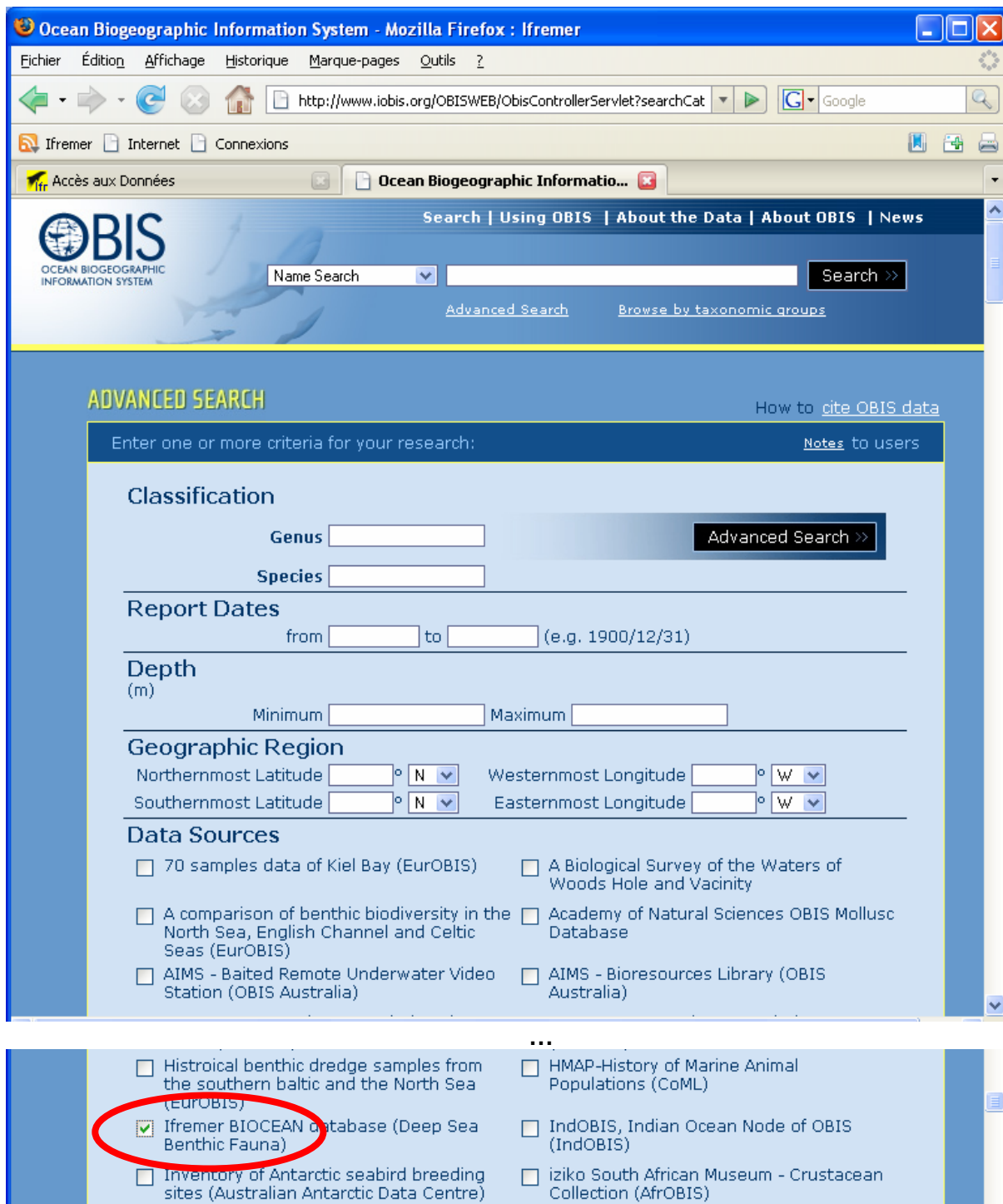
At the bottom of the page, it says "OBIS is a project of the CENSUS OF MARINE LIFE". The browser status bar at the bottom left shows "Terminé".

2. Select Biocean data exclusively

Clik on the “Advanced search” button

In order to select only Biocean data, click in front of the database name:
“Ifremer BIOCEAN database”

If you wish to make a selection among all, do not click on any Data source.
If you wish to make a selection among two Data sources, click on the two.



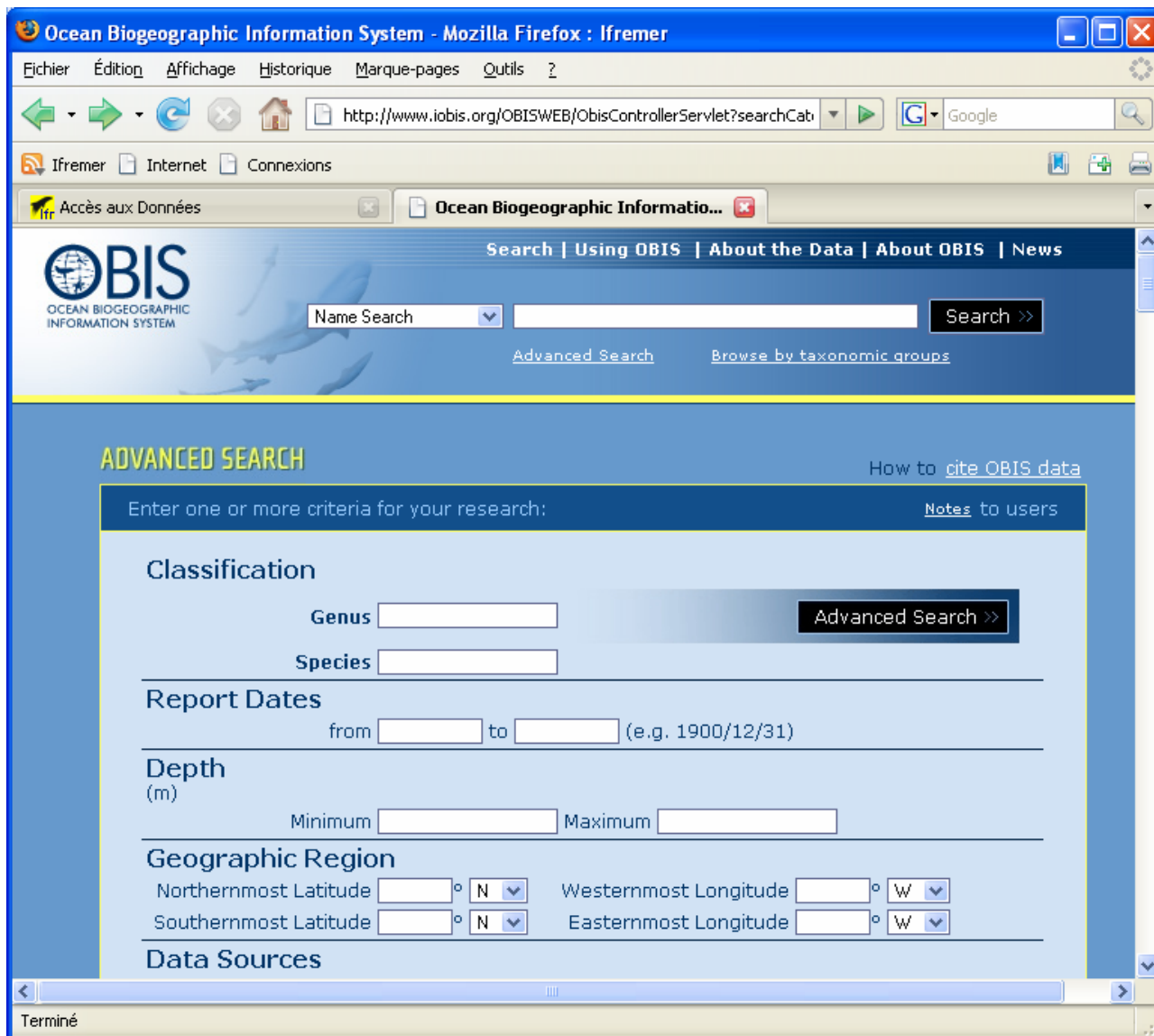
You can then decide to retrieve all the data and click on the “Advanced Search” button.

3. Make a selection through OBIS

If you wish to extract information on

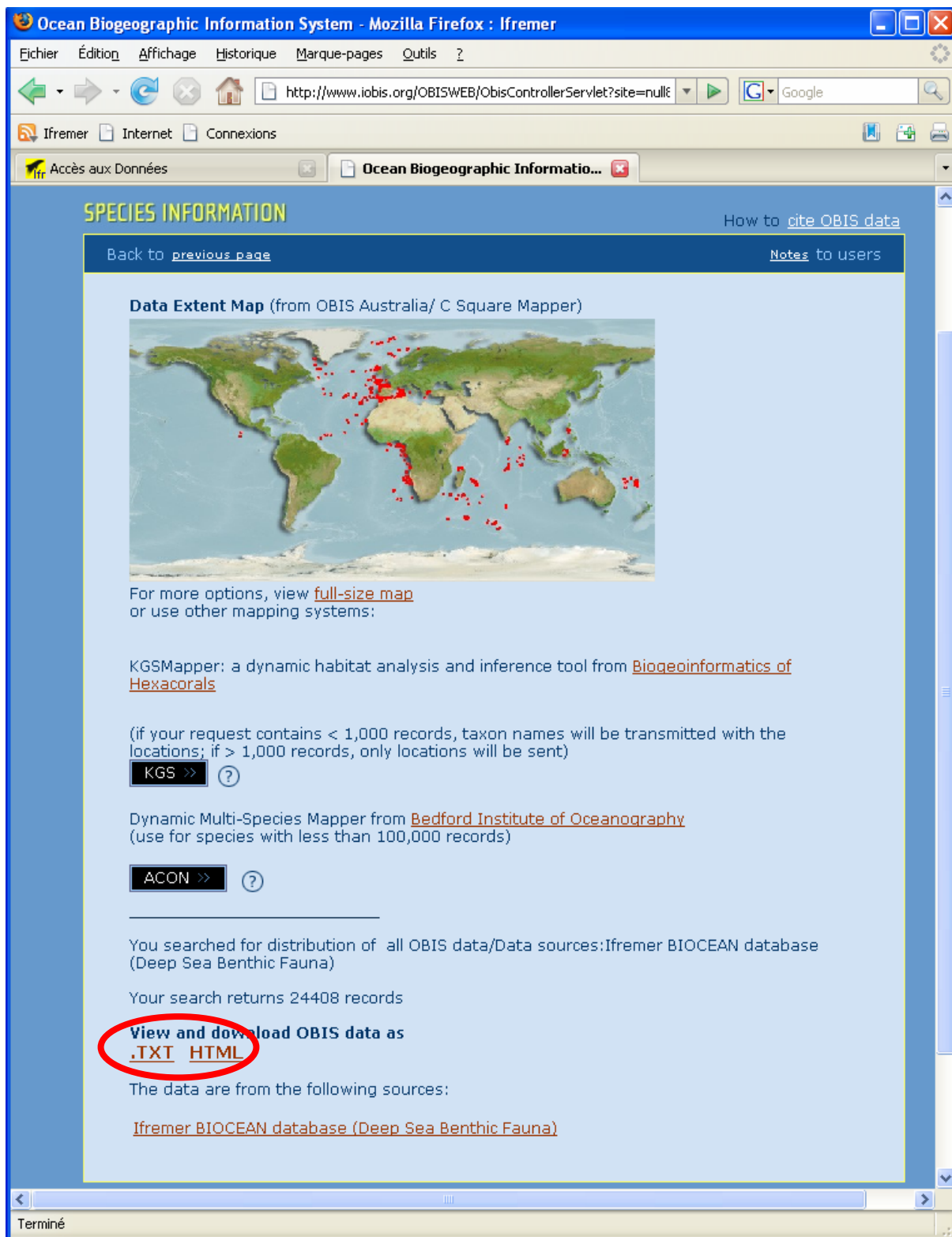
- only one species, or
- corresponding to a particular period of time, or depth or geographic region,

you can use the OBIS user interface to restrict the data file.



4. Show off the data

The result is as shown here after:

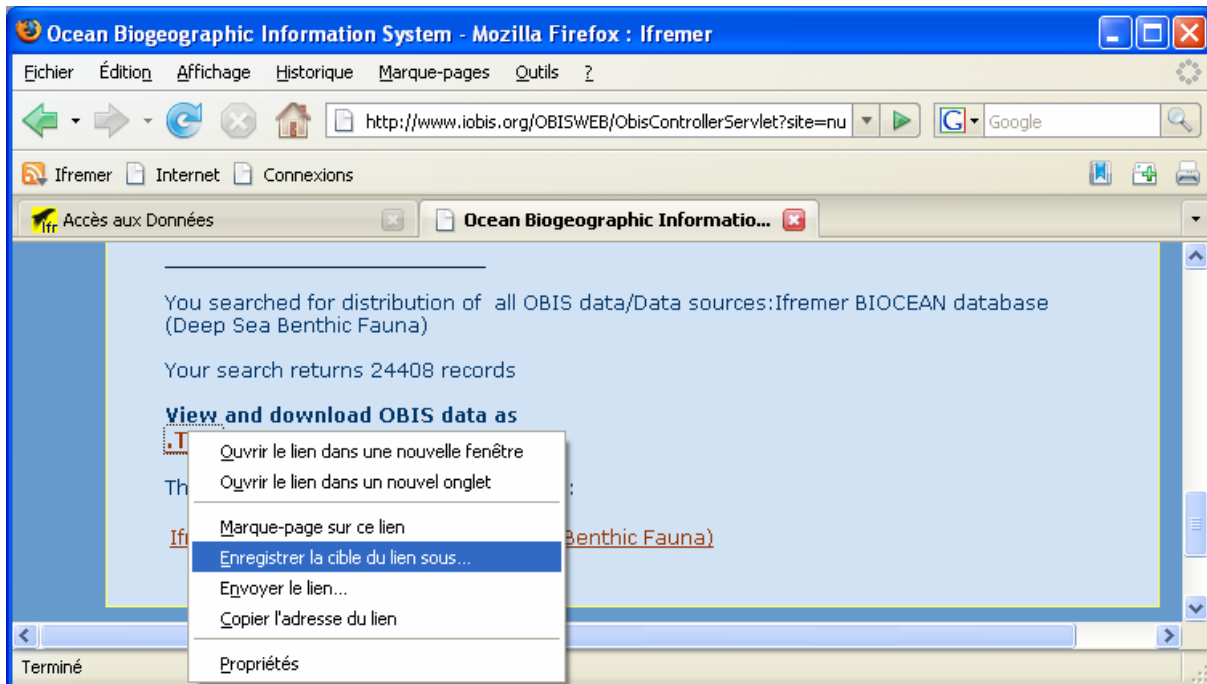


You can then open the result file with all the data by clicking on **.TXT** or **.HTML**.

5. Get the data

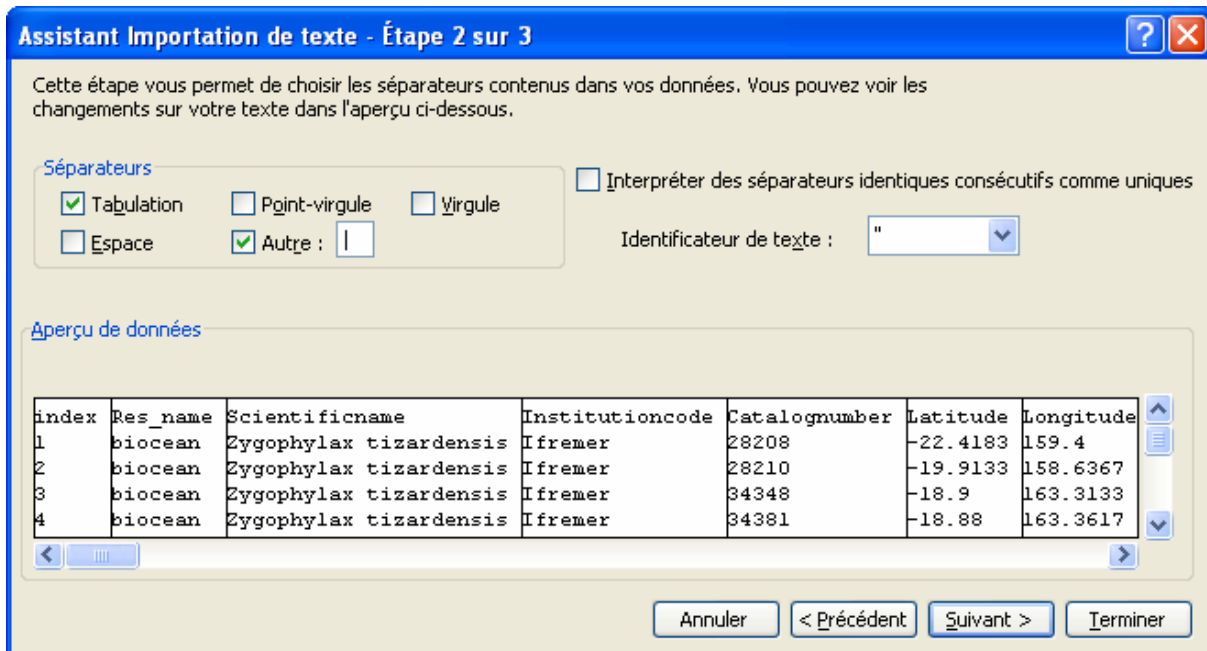
You can also decide to save the file on your computer, by clicking on “.TXT” with the right button, and choosing “Enregistrer la cible du lien sous...”.

The txt file is about 13 Mo.



6. Work with the data in Excel

Open the file in **Excel** and choose the character “|” to separate the columns.

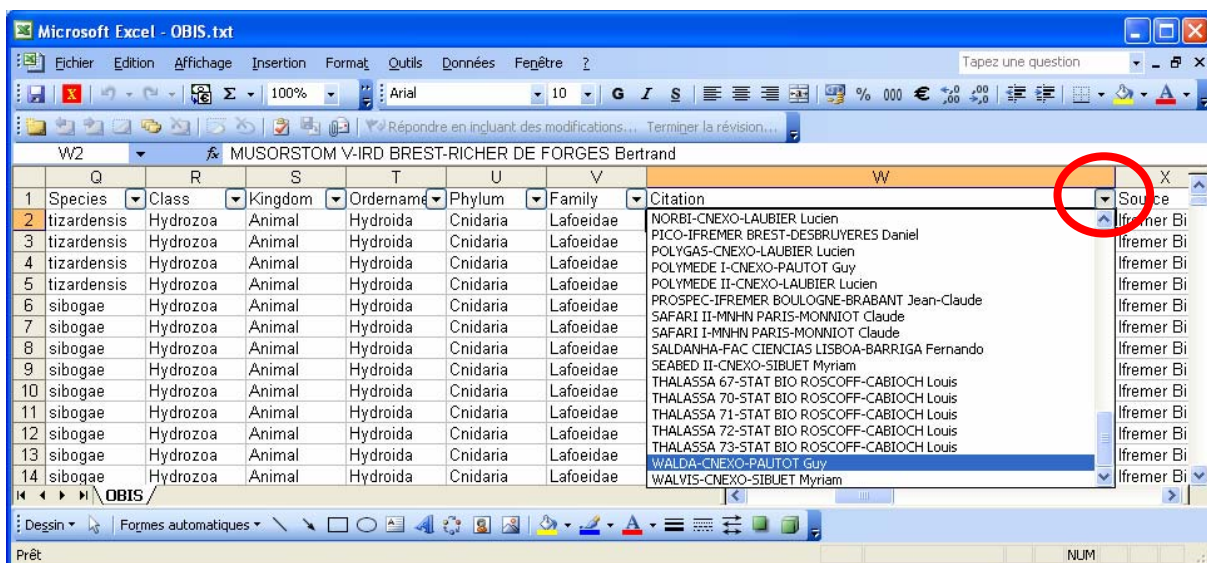


7. Select the data you wish to work with in Excel

Apply filters in Excel : **Data / filters / automatic filters**

In the column “Citation” you find the name of the cruise, the name of the institute and the chief scientist.

If you wish to keep only one cruise, “Walda” for example, choose WALDA – CNE XO – PAUTOT Guy.



The Excel sheet shows now exclusively data from WALDA cruise.

You can apply restrictions on other columns if you wish to.