

CARAIBES

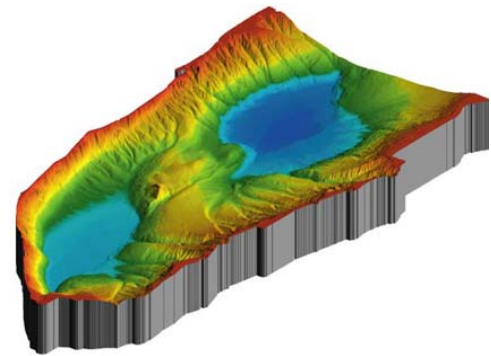
Cartography Adapted to Imagery and Bathymetry of Sonars and multibeam echosounders

What is it for?

- Importation, extraction, correction and visualization of navigation and bathymetric/imagery data from many multibeam echosounders (Simrad, Reson, Seabeam, Elac, ...)
- Importation, correction and visualization of imagery data from many towed side scan sonars (Simrad, Reson, DTS1, SAR, ...)
- 3D visualization and animation
- Qualification of sounders : this software got a hydrographical validation further to its certification by the SHOM (French Naval Hydrographic and Oceanographic Research Department)
- GIS interface

How it works?

- Software developed in C++ language
- In accordance with ISO 9001 version 2000 specifications
- More than 200 processing modules
- A license must be used on a single site but can be multi-users
- Run on PC (Linux) platform: Redhat, Mandrake, Debian, Ubuntu
- Software packages *Views* and *Vision* from ILOG SA for the user interface and 2D and 3D graphic visualizations

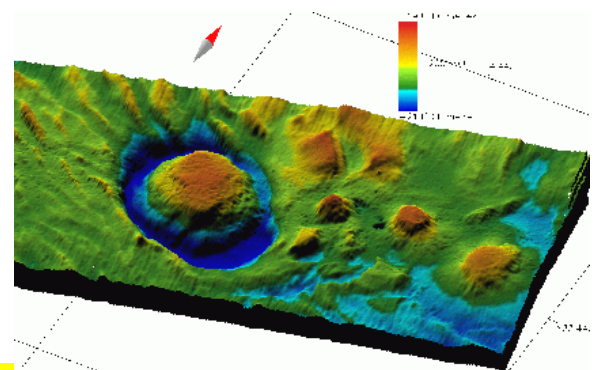
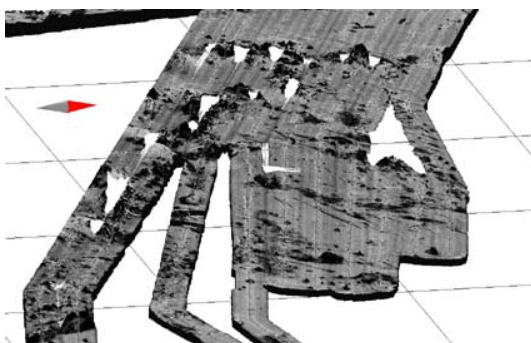


Key innovation

- A single interface processes several types of data in huge volumes
- This software is regularly updated (version 3.3 available in January 2007). Ifremer also plans every two years a user meeting which allows to identify the improvements to be brought to the software and to meet exact scientist requirements

Key achievements

- Scientific research in the field of marine geosciences
- Mapping of the Exclusive Economic Zones (EEZ)
- Collaboration in the field of deep offshore
- This software, available in French and English version, is currently used by Ifremer, 26 French organizations and 18 companies worldwide



Contact

- Business Development Department/
Commercial Department
- infosc@ifremer.fr